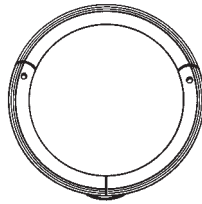


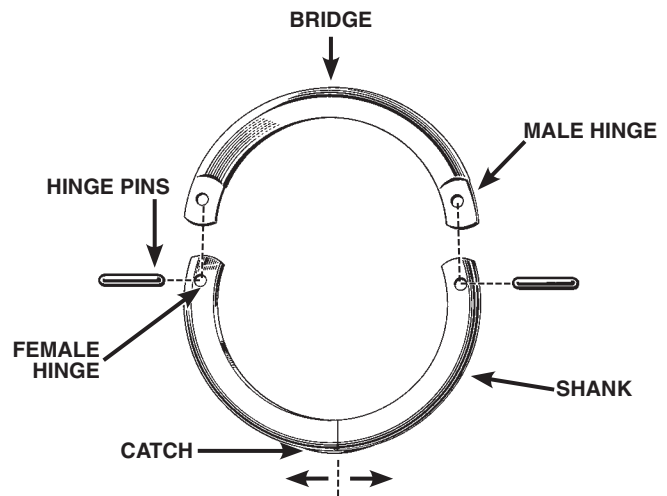
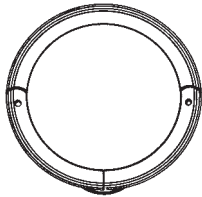
OUR SHANKS

ALL FINGER MATE SHANKS ARE AVAILABLE IN EITHER THE "K" SERIES WHICH IS A $\frac{3}{4}$ SHANK OR THE "J" SERIES WHICH IS A $\frac{1}{2}$ SHANK.

The "K" series
 $\frac{3}{4}$ shank



The "J" series
 $\frac{1}{2}$ shank



The PRIMARY RULE in selecting the proper series is to use the "K" series ($\frac{3}{4}$ shank) whenever possible. Because of its longer movable sections, the "K" series shanks are more easily grasped and operated by the wearer. Furthermore, all of the "K" series shanks open three full sizes regardless of the finger size. The "K" series shank can be used on any ring the top portion of which is less than $\frac{1}{4}$ of the total circumference of the ring. If the top portion of the ring is greater than $\frac{1}{4}$ of the total circumference, but less than $\frac{1}{2}$, then the "J" series ($\frac{1}{2}$ shank) should be used. The "J" series shank does its job as well as the "K" series shank, but because of its shorter movable sections, there is slightly less to grasp by the wearer in order to open. The very small finger sizes (3 to 4) of the "J" series open slightly less than the full three sizes that the rest of the "J" series and all of the "K" series shanks do.

DETERMINE THE PROPER WIDTH SHANK REQUIRED

Straight Widths – Basic Shanks



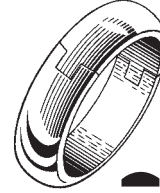
2mm



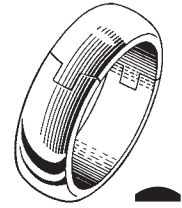
3mm



4mm



5mm



6mm

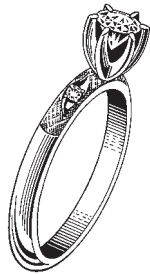
After first determining the proper series shank required, either "K" or "J", measure the width of the existing shank in the area just above where the hinge of the Finger Mate shank will be.

ORDERING PROCEDURE

Order by specifying the series required, "K" or "J", with the number following indicating the millimeter width of the shank.

FOR INSTANCE....

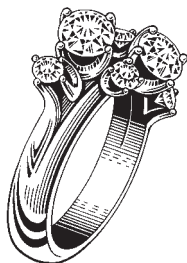
Here are typical rings showing the series and width shank needed.



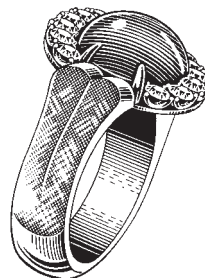
2mm – $\frac{3}{4}$ shank needed...
order K2 in proper size



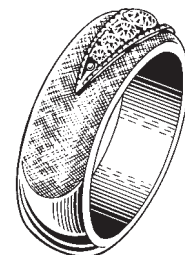
3mm – $\frac{3}{4}$ shank needed...
order K3 in proper size



4mm – $\frac{1}{2}$ shank needed...
order J4 in proper size



5mm – $\frac{1}{2}$ shank needed...
order J5 in proper size



6mm – $\frac{1}{2}$ shank needed...
order J6 in proper size

ILLUSTRATIONS OF "K" SERIES (3/4 SHANKS)

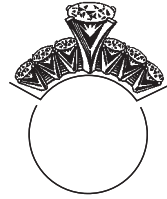
For determining maximum limits of cut-off top of ring that can be used with this series

DIRECTIONS FOR USING DIAGRAMS

1. Determine best place to cut off top of ring.
2. Using diagram of proper closed finger size required, place top inside edge of ring next to top edge of diagram.
3. Determine if part of ring to be cut off falls within the lines which are the maximum limits for the particular size

EXAMPLE

Customer requires a size 5 closed



Cut-off top falls within maximum limits for size 5.

Order "K" series in proper width, height and metal

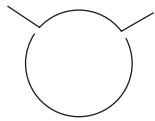


Cut-off top falls outside maximum limits for size 5.

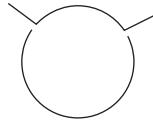
"K" series cannot be used. Try "J" series illustration.



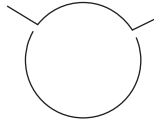
SIZE 3



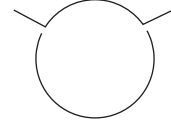
SIZE 3 1/2



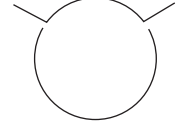
SIZE 4



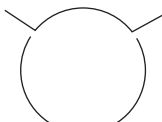
SIZE 4 1/2



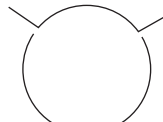
SIZE 5



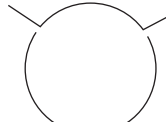
SIZE 5 1/2



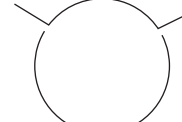
SIZE 6



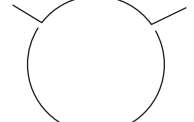
SIZE 6 1/2



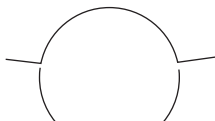
SIZE 7



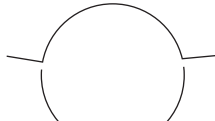
SIZE 7 1/2



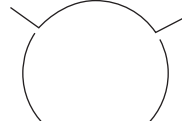
SIZE 8



SIZE 8 1/2



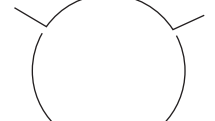
SIZE 9



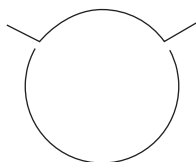
SIZE 9 1/2



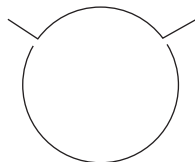
SIZE 10



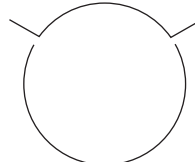
SIZE 10 1/2



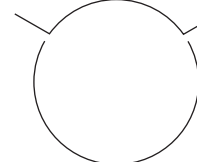
SIZE 11



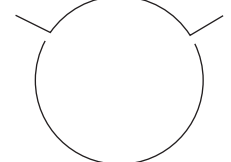
SIZE 11 1/2



SIZE 12



SIZE 12 1/2



SIZE 13

FOR IN BETWEEN 1/4 AND 3/4 SIZES, USE NEXT SMALLER ILLUSTRATION.

ILLUSTRATIONS OF "J" SERIES (1/2 SHANKS)

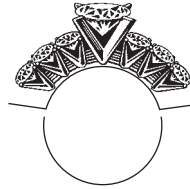
For determining maximum limits of cut-off top of ring that can be used with this series

DIRECTIONS FOR USING DIAGRAMS

1. Determine best place to cut off top of ring.
2. Using diagram of proper closed finger size required, place top inside edge of ring next to top edge of diagram.
3. Determine if part of ring to be cut off falls within the lines which are the maximum limits for the particular size

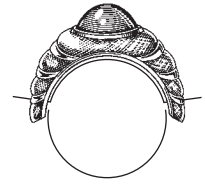
EXAMPLE

Customer requires a size 5 closed



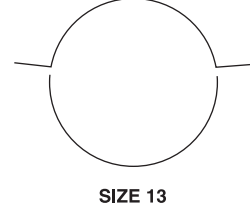
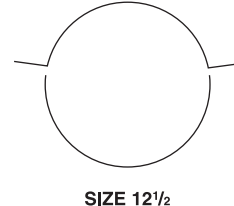
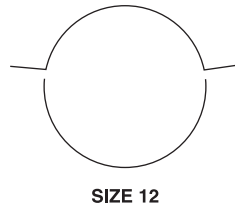
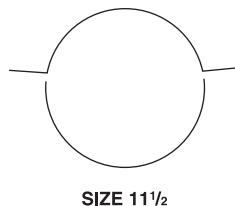
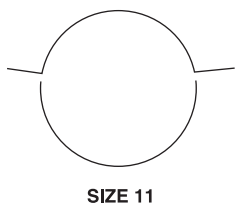
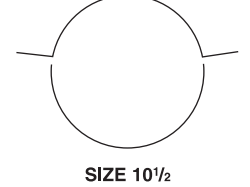
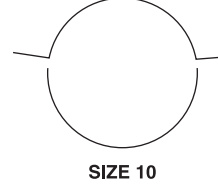
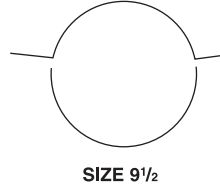
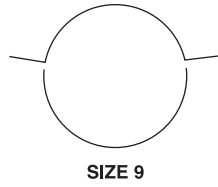
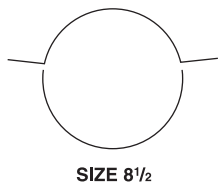
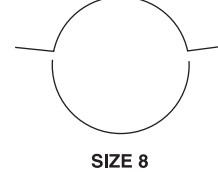
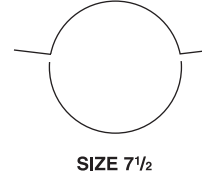
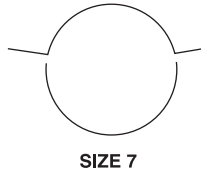
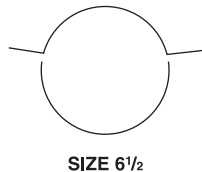
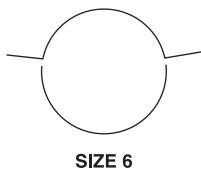
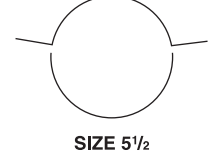
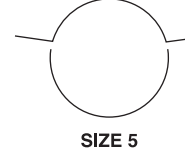
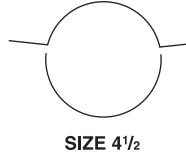
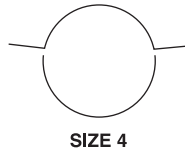
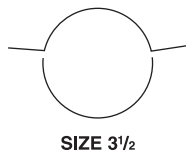
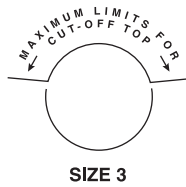
Cut-off top falls within maximum limits for size 5.

Order "J" series in proper width, height and metal



Cut-off top falls outside maximum limits for size 5.

"J" series cannot be used unless top can be cut shorter. See next to last paragraph page 5.



FOR IN BETWEEN 1/4 AND 3/4 SIZES, USE NEXT SMALLER ILLUSTRATION.

DETERMINE THE PROPER WIDTH SHANK REQUIRED

Tapered Shanks

Tapered shanks have tops that are wider than the bottoms. The shanks are supplied as a straight width bottom for you to match the taper of the existing ring. Note that only the top can be tapered (since it is made of solid wire). The bottoms, which are made of hollow tubing, cannot be tapered, blended or filed.



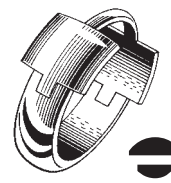
4mm top
2mm bottom



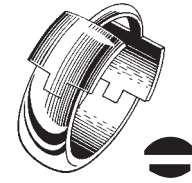
5mm top
3mm bottom



6mm top
4mm bottom



7½mm top
5mm bottom



7½mm top
6mm bottom

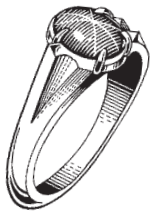
Select an appropriate shank with the right combination of narrow bottom and wider tapered top for the ring in question.

Note, however, that while all the tapered shanks are available in both the "K" and "J" series, most applications requiring tapered shanks usually require also the longer top portion available in the "J" series.

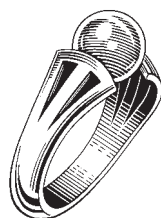
The 7½mm top may be ordered in a cut top (style B) to save on metal charges, as pictured above.

ORDERING PROCEDURE

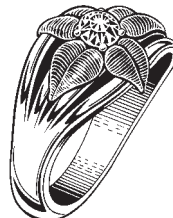
The tapered shanks are ordered by specifying the "K" or "J" series required, the top and bottom widths and the finger size. For instance, J 5 x 3 mm., size 6.



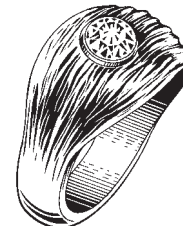
4mm top with
2mm bottom
needed...
order J 4 x 2
in proper size



4mm top with
3mm bottom
needed...
order J 5 x 3
in proper size



7mm top with
4mm bottom
needed...
order J 7½ x 4
in proper size



7½mm top with
5mm bottom
needed...
order J 7½ x 5
in proper size



7½mm top with
6mm bottom
needed...
order J 7½ x 6
in proper size

All of the tapered shank tops are made to be filed down and *blended* into the customer's ring.

COMBINING TWO RINGS ON A SINGLE SHANK

In selecting a shank on which to combine two rings, the same procedure is followed. The combined width of the two rings to be joined is measured. The shank selected can be slightly narrower than this combined width in order that the finished result of the two rings together on one shank will be neat and graceful.



Order
Tapered Shank
J 5 x 3mm
in proper size

